

# UniFi® | SWITCH

Managed PoE+ Gigabit Switches with SFP

Models: US-8-150W, US-16-150W, US-24-250W,  
US-24-500W, US-48-500W, US-48-750W

Non-Blocking Throughput Switching Performance

Gigabit Ethernet RJ45 and SFP+/SFP Ports

Auto-Sensing IEEE 802.3af/at PoE



# UniFi® SWITCH

Build and expand your network with Ubiquiti Networks® UniFi® Switch, part of the UniFi line of products. The UniFi Switch is a fully managed, PoE+ Gigabit switch, delivering robust performance and intelligent switching for growing networks.

## Switching Performance

The UniFi Switch offers the forwarding capacity to simultaneously process traffic on all ports at line rate without any packet loss.

## PoE+ Flexibility

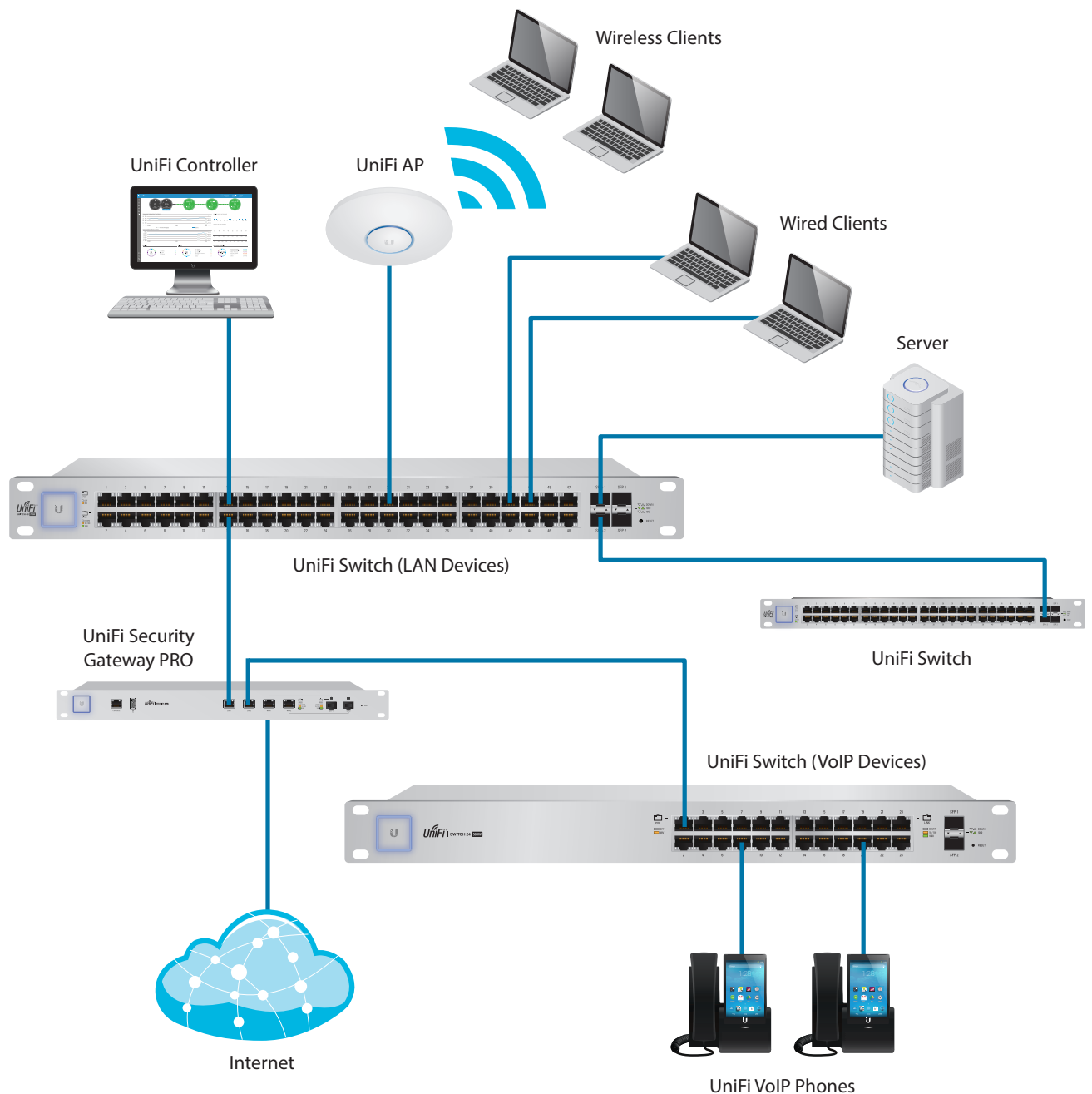
The UniFi Switch models are available with 8, 16, 24, or 48 PoE Gigabit Ethernet ports of auto-sensing IEEE 802.3af/at or configurable 24V passive PoE to simplify your infrastructure.

By default, the UniFi Switch automatically detects 802.3af/at devices so they automatically receive PoE. For 24V passive PoE devices, manually enable 24V passive PoE using the UniFi Controller software.

## Fiber Connectivity

The UniFi Switch provides fiber connectivity options for easy expansion of your networks. Each UniFi Switch model includes two SFP ports for uplinks of up to 1 Gbps.

Each 48-port model adds two SFP+ ports for high-capacity uplinks of up to 10 Gbps, so you can directly connect to a high-performance storage server or deploy a long-distance uplink to another switch.



# UniFi Controller

Designed for convenient management, the UniFi Controller software allows admins to configure and monitor the UniFi Switch and other UniFi devices using a graphical user interface. You can download it from [www.ubnt.com](http://www.ubnt.com) at no extra charge – there is no separate software, licensing, or support fee.

## Multi-Site Management

A single instance of the UniFi Controller running in the cloud can manage multiple UniFi sites within a centralized interface. Each site is logically separated and has its own network monitoring, configuration, maps, statistics, and admin accounts.

## Switch Configuration

You can access any managed UniFi Switch through the UniFi Controller to configure a variety of features:

- PoE setting per port
- Operation mode (switching, mirroring, or aggregate) per port
- Network/VLAN configuration
- Jumbo frame and flow control services
- Network settings
- Storm control setting per port
- Spanning tree configuration

## Switch Port Status

You can also view status information for each port:

- Connection speed and duplex mode
- TX/RX data rates
- PoE status
- Network/VLAN setting



## Dashboard

The *Dashboard* tab provides a visual representation of your network's status. Basic information is provided for each network segment.

DEVICE NAME	IP ADDRESS	STATUS	MODEL	VERSION	UPTIME	ACTIONS
Rack USG-Pro-4	192.168.1.1	CONNECTED	UniFi Security Gateway 4P	5.11.4852827	36 55m 45s	LOCATE   RESTART
APIC-US-16-150W	192.168.1.233	CONNECTED	UniFi Switch 16 POE-150W	3.5.1.4088	10d 18h 45m 7s	LOCATE   RESTART
Downstairs US-48-500W	192.168.1.191	CONNECTED	UniFi Switch 48 POE-500W	3.5.1.4088	4d 22h 55m 15s	LOCATE   RESTART
Workshop US-48	192.168.1.246	CONNECTED	UniFi Switch 48 POE-750W	3.5.1.4088	3d 21h 12m 13s	LOCATE   RESTART
Rack US-48-750W				3.5.1.4088	4d 21h 55m 29s	LOCATE   RESTART
PatrolPanel US-8-150W				3.5.1.4088	1d 8h 10m 17s	LOCATE   RESTART
AC-Broadcom				3.5.1.4088	4d 21h 53m 45s	LOCATE   RESTART
AC-LITE				3.6.1.3553	3d 21h 17m 32s	LOCATE   RESTART
AC-LR-Basement				3.6.1.3553	4d 21h 54m 4s	LOCATE   RESTART
44d97d702d433				3.6.1.3553	3d 21h 1m 32s	LOCATE   RESTART
44d97d702d444				3.6.1.3553	3d 19m 28s	LOCATE   RESTART
AC-Pro-Basement				3.6.1.3553	4d 21h 53m 31s	LOCATE   RESTART
44d97d79d289				3.6.1.3553	9d 17h 59m 46s	LOCATE   RESTART
Protonet1 UAP-AC-Pro				3.6.1.3553	1d 8h 9m 12s	LOCATE   RESTART
AC-Pro-Crawlspace				3.6.1.3553	3d 21h 19m 14s	LOCATE   RESTART
Timeout				3.5.1.4088	1d 8h 9m 14s	LOCATE   RESTART
Living				3.5.1.4088	1d 8h 8m 36s	LOCATE   RESTART
String				3.5.1.4088	1d 8h 8m 16s	LOCATE   RESTART
Master				3.5.1.4088	1d 8h 8m 16s	LOCATE   RESTART
Loft				3.5.1.4088	1d 8h 8m 32s	LOCATE   RESTART
Basement				3.5.1.4088	1d 8h 8m 25s	LOCATE   RESTART
24x43c-9427c9f				3.5.1.4088	3d 17h 22m 54s	LOCATE   RESTART
Pro-nomnet2	192.168.1.164	CONNECTED	UniFi AP-Pro	3.5.1.4088	1d 8h 20m 25s	LOCATE   RESTART
Pro-nomnet	192.168.1.141	CONNECTED	UniFi AP-Pro	3.5.1.4088	3d 21h 16m 49s	LOCATE   RESTART

## Device Configuration

The *Devices* screen displays the UniFi devices discovered by the UniFi Controller. You can access each managed device for device details and configuration.

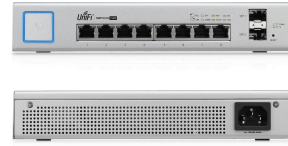


## Models

### UniFi® | SWITCH 8 150W

Model: US-8-150W

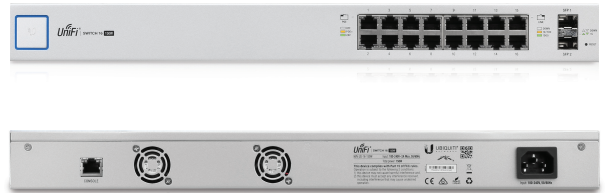
- (8) Gigabit RJ45 Ports
- (2) SFP Ports
- Non-Blocking Throughput: 10 Gbps
- Switching Capacity: 20 Gbps
- Forwarding Rate: 14.88 Mpps
- Maximum Power Consumption: 150W
- Supports POE+ IEEE 802.3at/af and 24V Passive PoE
- Quiet, Fanless Operation
- Rackmountable with Rack-Mount Brackets (Included)
- Desktop-Mountable (Do not physically stack the US-8-150W.)



### UniFi® | SWITCH 16 150W

Model: US-16-150W

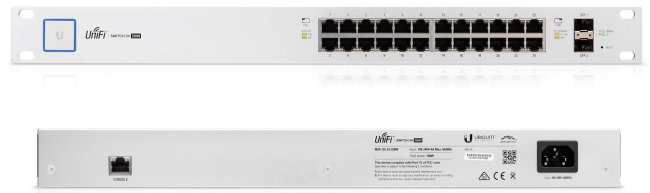
- (16) Gigabit RJ45 Ports
- (2) SFP Ports
- (1) Serial Console Port (Reserved for Future Use)
- Non-Blocking Throughput: 18 Gbps
- Switching Capacity: 36 Gbps
- Forwarding Rate: 26.78 Mpps
- Maximum Power Consumption: 150W
- Supports POE+ IEEE 802.3at/af and 24V Passive PoE
- Rack-Mountable or Wall-Mountable with Rack-Mount Brackets (Included)



### UniFi® | SWITCH 24 250W

Model: US-24-250W

- (24) Gigabit RJ45 Ports
- (2) SFP Ports
- (1) Serial Console Port (Reserved for Future Use)
- Non-Blocking Throughput: 26 Gbps
- Switching Capacity: 52 Gbps
- Forwarding Rate: 38.69 Mpps
- Maximum Power Consumption: 250W
- Supports POE+ IEEE 802.3at/af and 24V Passive PoE
- Rack-Mountable

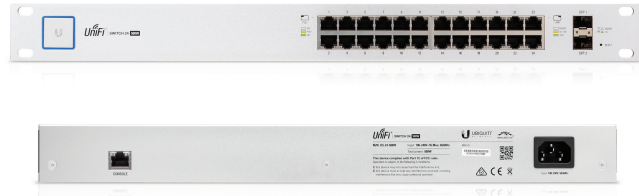




# UniFi® | SWITCH 24 500W

Model: US-24-500W

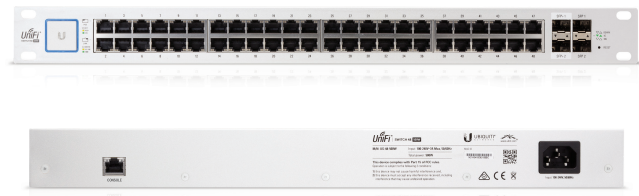
- (24) Gigabit RJ45 Ports
- (2) SFP Ports
- (1) Serial Console Port (Reserved for Future Use)
- Non-Blocking Throughput: 26 Gbps
- Switching Capacity: 52 Gbps
- Forwarding Rate: 38.69 Mpps
- Maximum Power Consumption: 500W
- Supports POE+ IEEE 802.3at/af and 24V Passive PoE
- Rack-Mountable



# UniFi® | SWITCH 48 500W

Model: US-48-500W

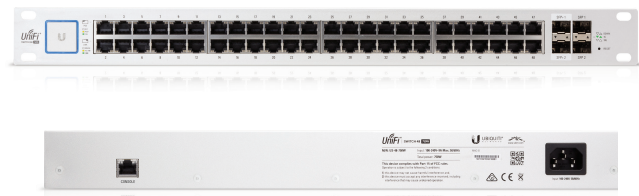
- (48) Gigabit RJ45 Ports
- (2) SFP+ Ports
- (2) SFP Ports
- (1) Serial Console Port (Reserved for Future Use)
- Non-Blocking Throughput: 70 Gbps
- Switching Capacity: 140 Gbps
- Forwarding Rate: 104.16 Mpps
- Maximum Power Consumption: 500W
- Supports POE+ IEEE 802.3at/af and 24V Passive PoE
- Rack-Mountable



# UniFi® | SWITCH 48 750W

Model: US-48-750W

- (48) Gigabit RJ45 Ports
- (2) SFP+ Ports
- (2) SFP Ports
- (1) Serial Console Port (Reserved for Future Use)
- Non-Blocking Throughput: 70 Gbps
- Switching Capacity: 140 Gbps
- Forwarding Rate: 104.16 Mpps
- Maximum Power Consumption: 750W
- Supports POE+ IEEE 802.3at/af and 24V Passive PoE
- Rack-Mountable



# Hardware Specifications

US-8-150W		
Dimensions	204 x 43 x 235 mm (8.03 x 1.69 x 9.25")	
Weight	Rack-Mount Brackets Excluded	Rack-Mount Brackets Included
	1.65 kg (3.67 lb)	1.7 kg (3.75 lb)
Networking Interfaces	(8) 10/100/1000 Mbps RJ45 Ethernet Ports (2) 1 Gbps SFP Ethernet Ports	
Management Interface	Ethernet In-Band	
Total Non-Blocking Throughput	10 Gbps	
Switching Capacity	20 Gbps	
Forwarding Rate	14.88 Mpps	
Power Method	100-240VAC/50-60 Hz, Universal Input	
Power Supply	AC/DC, Internal, 150W DC	
Max. Power Consumption	Including PoE Output	Excluding PoE Output
	150W	20W
LEDs Per Port	RJ45 Data Ports	SFP Data Ports
	PoE, Speed/Link/Activity	Speed/Link/Activity
Sound Level	34 dBa	
ESD/EMP Protection	Air: ± 24 kV, Contact: ± 24 kV	
Shock and Vibration	ETSI300-019-1.4 Standard	
Operating Temperature	-5 to 40° C (23 to 104° F)	
Operating Humidity	5 to 95% Noncondensing	
Certifications	CE, FCC, IC	

PoE Per Port	
PoE Interfaces	POE+ IEEE 802.3af/at (Pins 1, 2+; 3, 6-) 24VDC Passive PoE (Pins 4, 5+; 7, 8-)
Max. PoE+ Wattage per Port by PSE	34.2W
Voltage Range 802.3at Mode	50–57V
Max. Passive PoE Wattage per Port	17W
24V Passive PoE Voltage Range	20–27V

# Hardware Specifications

US-16-150W		
Dimensions	443 x 43 x 221 mm (17.44 x 1.69 x 8.70")	
Weight	Rack-Mount Brackets Excluded	Rack-Mount Brackets Included
	2.80 kg (6.17 lb)	2.89 kg (6.37 lb)
Networking Interfaces	(16) 10/100/1000 Mbps RJ45 Ethernet Ports (2) 1 Gbps SFP Ethernet Ports	
Management Interface	Ethernet In-Band	
Total Non-Blocking Throughput	18 Gbps	
Switching Capacity	36 Gbps	
Forwarding Rate	26.78 Mpps	
Power Method	100-240VAC/50-60 Hz, Universal Input	
Power Supply	AC/DC, Internal, 150W DC	
Max. Power Consumption	Including PoE Output	Excluding PoE Output
	150W	28W
LEDs Per Port	RJ45 Data Ports	SFP Data Ports
	PoE, Speed/Link/Activity	Speed/Link/Activity
Sound Level	Fan Level: 0	Fan Level: 1, 2, 3
	34 dBa	37 dBa
ESD/EMP Protection	Air: ± 24 kV, Contact: ± 24 kV	
Shock and Vibration	ETSI300-019-1.4 Standard	
Operating Temperature	-5 to 40° C (23 to 104° F)	
Operating Humidity	5 to 95% Noncondensing	
Certifications	CE, FCC, IC	

PoE Per Port	
PoE Interfaces	POE+ IEEE 802.3af/at (Pins 1, 2+; 3, 6-) 24VDC Passive PoE (Pins 4, 5+; 7, 8-)
Max. PoE+ Wattage per Port by PSE	34.2W
Voltage Range 802.3at Mode	50-57V
Max. Passive PoE Wattage per Port	17W
24V Passive PoE Voltage Range	20-27V

# Hardware Specifications

US-24-250W				
Dimensions	485 x 43.7 x 285.4 mm (19.09 x 1.72 x 11.24")			
Weight	4.7 kg (10.4 lb)			
Networking Interfaces	(24) 10/100/1000 Mbps RJ45 Ethernet Ports (2) 1 Gbps SFP Ethernet Ports			
Management Interface	(1) RJ45 Serial Port Out-of-Band (Reserved for Future Use), Ethernet In-Band			
Total Non-Blocking Throughput	26 Gbps			
Switching Capacity	52 Gbps			
Forwarding Rate	38.69 Mpps			
Power Method	100-240VAC/50-60 Hz, Universal Input			
Power Supply	AC/DC, Internal, 250W DC			
Max. Power Consumption	Including PoE Output		Excluding PoE Output	
	250W		30W	
LEDs Per Port	RJ45 Data Ports		SFP Data Ports	
	PoE, Speed/Link/Activity		Speed/Link/Activity	
Sound Level	Fan Level 0	Fan Level 1	Fan Level 2	Fan Level 3
	38 dBa	42 dBa	44 dBa	47 dBa
ESD/EMP Protection	Air: ± 24 kV, Contact: ± 24 kV			
Shock and Vibration	ETSI300-019-1.4 Standard			
Operating Temperature	-5 to 40° C (23 to 104° F)			
Operating Humidity	5 to 95% Noncondensing			
Certifications	CE, FCC, IC			

PoE Per Port	
PoE Interfaces	POE+ IEEE 802.3af/at (Pins 1, 2+; 3, 6-) 24VDC Passive PoE (Pins 4, 5+; 7, 8-)
Max. PoE+ Wattage per Port by PSE	34.2W
Voltage Range 802.3at Mode	50–57V
Max. Passive PoE Wattage per Port	17W
24V Passive PoE Voltage Range	20–27V



# Hardware Specifications

US-24-500W				
Dimensions	485 x 43.7 x 285.4 mm (19.09 x 1.72 x 11.24")			
Weight	4.8 kg (10.6 lb)			
Networking Interfaces	(24) 10/100/1000 Mbps RJ45 Ethernet Ports (2) 1 Gbps SFP Ethernet Ports			
Management Interface	(1) RJ45 Serial Port Out-of-Band (Reserved for Future Use), Ethernet In-Band			
Total Non-Blocking Throughput	26 Gbps			
Switching Capacity	52 Gbps			
Forwarding Rate	38.69 Mpps			
Power Method	100-240VAC/50-60 Hz, Universal Input			
Power Supply	AC/DC, Internal, 500W DC			
Max. Power Consumption	Including PoE Output		Excluding PoE Output	
	500W		30W	
LEDs Per Port	RJ45 Data Ports		SFP Data Ports	
	PoE, Speed/Link/Activity		Speed/Link/Activity	
Sound Level	Fan Level 0	Fan Level 1	Fan Level 2	Fan Level 3
	40 dBa	45 dBa	49 dBa	53 dBa
ESD/EMP Protection	Air: ± 24 kV, Contact: ± 24 kV			
Shock and Vibration	ETSI300-019-1.4 Standard			
Operating Temperature	-5 to 40° C (23 to 104° F)			
Operating Humidity	5 to 95% Noncondensing			
Certifications	CE, FCC, IC			

PoE Per Port	
PoE Interfaces	POE+ IEEE 802.3af/at (Pins 1, 2+; 3, 6-) 24VDC Passive PoE (Pins 4, 5+; 7, 8-)
Max. PoE+ Wattage per Port by PSE	34.2W
Voltage Range 802.3at Mode	50-57V
Max. Passive PoE Wattage per Port	17W
24V Passive PoE Voltage Range	20-27V

# Hardware Specifications

US-48-500W				
Dimensions	485 x 43.7 x 374.6 mm (19.09 x 1.72 x 14.75")			
Weight	6.1 kg (13.5 lb)			
Networking Interfaces	(48) 10/100/1000 Mbps RJ45 Ethernet Ports (2) 1/10 Gbps SFP+ Ethernet Ports (2) 1 Gbps SFP Ethernet Ports			
Management Interface	(1) RJ45 Serial Port Out-of-Band (Reserved for Future Use), Ethernet In-Band			
Total Non-Blocking Throughput	70 Gbps			
Switching Capacity	140 Gbps			
Forwarding Rate	104.16 Mpps			
Power Method	100-240VAC/50-60 Hz, Universal Input			
Power Supply	AC/DC, Internal, 500W DC			
Max. Power Consumption	Including PoE Output		Excluding PoE Output	
	500W		64W	
LEDs Per Port	RJ45 Data Ports		SFP Data Ports	
	PoE, Speed/Link/Activity		Speed/Link/Activity	
Sound Level	Fan Level 0	Fan Level 1	Fan Level 2	Fan Level 3
	40 dBa	43 dBa	45 dBa	47 dBa
ESD/EMP Protection	Air: ± 24 kV, Contact: ± 24 kV			
Shock and Vibration	ETSI300-019-1.4 Standard			
Operating Temperature	-5 to 40° C (23 to 104° F)			
Operating Humidity	5 to 95% Noncondensing			
Certifications	CE, FCC, IC			

PoE Per Port	
PoE Interfaces	POE+ IEEE 802.3af/at (Pins 1, 2+; 3, 6-) 24VDC Passive PoE (Pins 4, 5+; 7, 8-)
Max. PoE+ Wattage per Port by PSE	34.2W
Voltage Range 802.3at Mode	50–57V
Max. Passive PoE Wattage per Port	17W
24V Passive PoE Voltage Range	20-27V

# Hardware Specifications

US-48-750W				
Dimensions	485 x 43.7 x 374.6 mm (19.09 x 1.72 x 14.75")			
Weight	6.5 kg (14.3 lb)			
Networking Interfaces	(48) 10/100/1000 Mbps RJ45 Ethernet Ports (2) 1/10 Gbps SFP+ Ethernet Ports (2) 1 Gbps SFP Ethernet Ports			
Management Interface	(1) RJ45 Serial Port Out-of-Band (Reserved for Future Use), Ethernet In-Band			
Total Non-Blocking Throughput	70 Gbps			
Switching Capacity	140 Gbps			
Forwarding Rate	104.16 Mpps			
Power Method	100-240VAC/50-60 Hz, Universal Input			
Power Supply	AC/DC, Internal, 750W DC			
Max. Power Consumption	Including PoE Output		Excluding PoE Output	
	750W		64W	
LEDs Per Port	RJ45 Data Ports		SFP Data Ports	
	PoE, Speed/Link/Activity		Speed/Link/Activity	
Sound Level	Fan Level 0	Fan Level 1	Fan Level 2	Fan Level 3
	40 dBa	43 dBa	45 dBa	48 dBa
ESD/EMP Protection	Air: ± 24 kV, Contact: ± 24 kV			
Shock and Vibration	ETSI300-019-1.4 Standard			
Operating Temperature	-5 to 40° C (23 to 104° F)			
Operating Humidity	5 to 95% Noncondensing			
Certifications	CE, FCC, IC			

PoE Per Port	
PoE Interfaces	POE+ IEEE 802.3af/at (Pins 1, 2+; 3, 6-) 24VDC Passive PoE (Pins 4, 5+; 7, 8-)
Max. PoE+ Wattage per Port by PSE	34.2W
Voltage Range 802.3at Mode	50-57V
Max. Passive PoE Wattage per Port	17W
24V Passive PoE Voltage Range	20-27V

Specifications are subject to change. Ubiquiti products are sold with a limited warranty described at: [www.ubnt.com/support/warranty](http://www.ubnt.com/support/warranty)  
 ©2015-2016 Ubiquiti Networks, Inc. All rights reserved. Ubiquiti, Ubiquiti Networks, the Ubiquiti U logo, the Ubiquiti beam logo, and UniFi are trademarks or registered trademarks of Ubiquiti Networks, Inc. in the United States and in other countries. All other trademarks are the property of their respective owners.