

 **Sharkoon**



REV100
ATX PC CASE



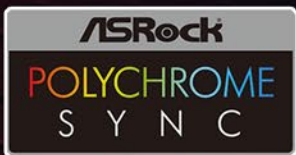
GAMING DESK REVOLUTION

The REV100 blends the innovative configuration of our REV case series into a compact design. Due to its space-saving dimensions, it fits easily into any setup and impresses with a simple but elegant look. Despite the smaller casing, the unmistakable features of the REV series are still to be seen, as also here, the mainboard is rotated 90 degrees and installed vertically. The tempered glass side panel is on the right side of the case, making the REV100 the ideal complement for smaller desks which are near or against walls on the left side.

SIMPLE ELEGANCE

In keeping with its compact dimensions, the look of the REV100 has been kept intentionally minimalist. The front panel has a design consisting of geometrical angles and lines and looks especially chic with a surface resembling that of brushed metal. The design frames a mesh grille which is embedded in the panel and illuminated from one side by an RGB strip. This provides the front of the case with a subtle play of colors.

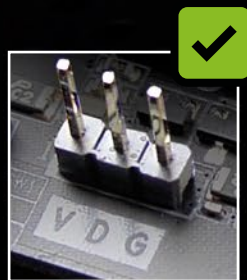
The REV100 case, along with all other Sharkoon products marked with the "ADDRESSABLE RGB" logo, are certified for Asus Aura Sync, MSI Mystic Light Sync, Gigabyte Fusion and ASRock Polychrome SYNC. These products are thus easy to incorporate into existing systems.



Sharkoon products marked with the "ADDRESSABLE RGB" logo are compatible with mainboards which have headers for addressable RGB LED fans and strips. The headers should have the pin configuration 5V-D-coded-G or 5V-D-G. Examples of these RGB connections from the most important mainboard manufacturers are shown below. The RGB pin configuration is independent of manufacturer. However, the naming and marking of these connections may vary between manufacturers. For further information concerning compatibility, refer to the manual of your mainboard, or visit the manufacturer's website.



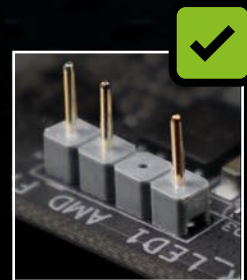
MSI



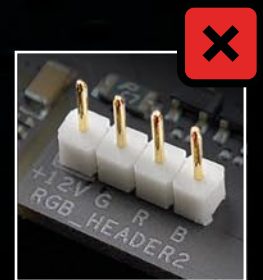
GIGABYTE



ASUS



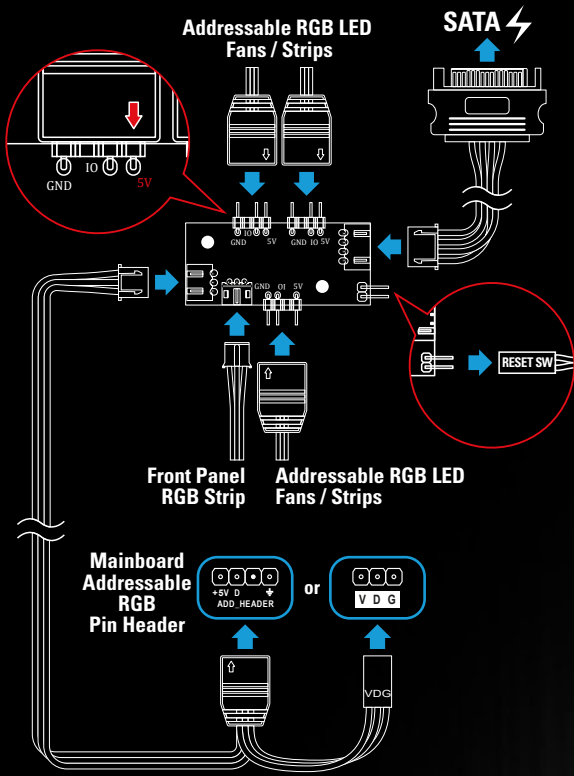
ASROCK



ASUS

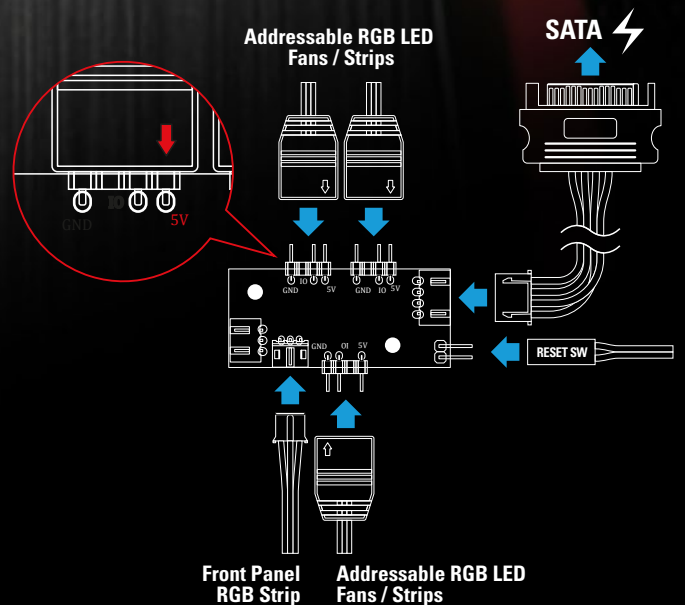
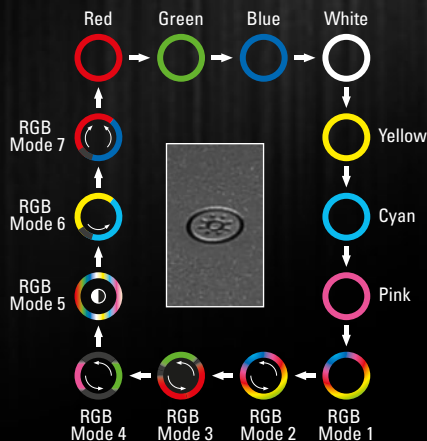
4-PORT ADDRESSABLE RGB CONTROLLER

The REV100 comes with a preinstalled addressable RGB controller. With compatible mainboards, this will function as a hub for controlling and synchronizing up to four addressable LED components, which will illuminate in up to 16.8 million colors. The controller is connected to the power supply via a SATA connector and to a mainboard via a 4-pin or 3-pin header for addressable LEDs with the pinout: 5V-D-coded-G or V-D-G.



MANUAL COLOR CONTROL

The REV100 also has a manual color control function for mainboards which do not have headers for addressable LED components. With this, the RGB controller is not connected to the mainboard, but rather connected to the power supply and the reset switch of the PC case. The switch's reset function is then replaced with a new function which allows up to fourteen lighting modes to be cycled through and selected, or, if desired, the lighting can be turned off.



INNOVATIVE DESIGN CONCEPT



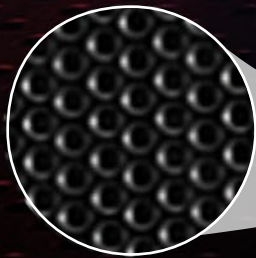
Like the other cases from the REV series, the REV100 is characterized by its novel configuration. The mainboard is installed vertically, rotated 90 degrees, providing a look which is far away from established standards. Cables can be stored neatly in the spacious compartment under the top panel and simply led out of the case via the cable pass-through on the rear panel.

TIDY CABLE MANAGEMENT

The REV100 will always stay tidy, thanks to the spacious cable compartment on the top. Here, the cables are held together with a cable clip and led to the outside of the case via a cable pass-through. The top panel has a cover for easy access to the cable compartment and to protect from dirt and dust.



Cover with Dust Filter and Perforation for an Optimal Airflow



Mesh Front Panel

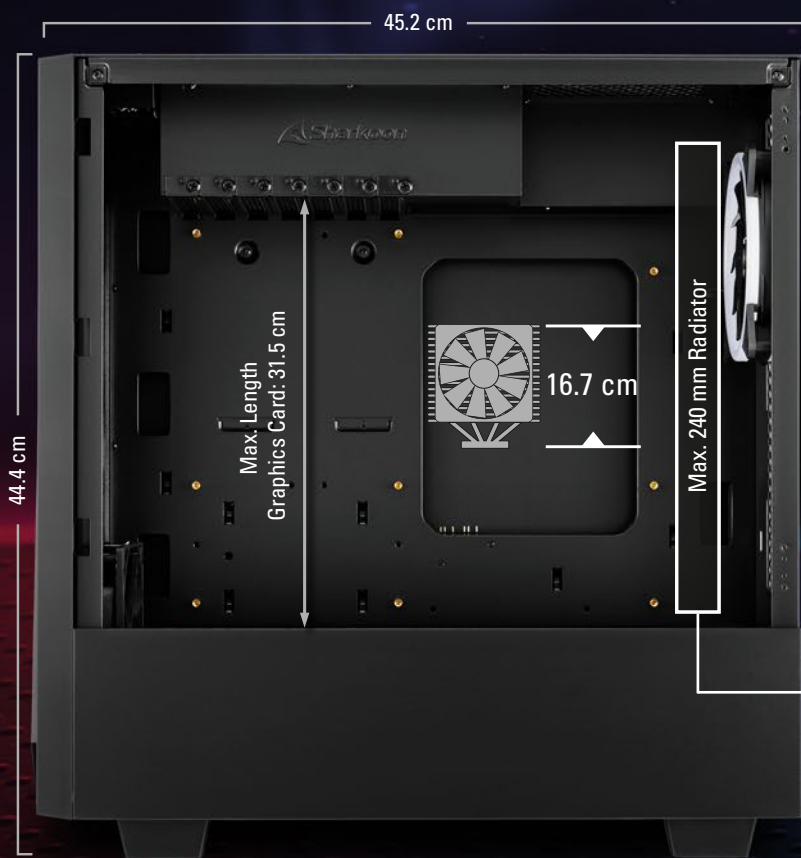


Removable Dust Filter on the Bottom Panel

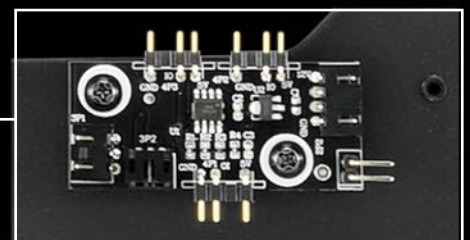
ESPECIALLY GOOD AIRFLOW

For its size, the REV100 is extremely breathable. The mesh grille in the front, behind which a 120 mm fan is already pre-installed, allows enough air to flow through the case. A detachable dust filter behind the front panel prevents unwanted dirt from entering the case. The detachable top cover is also perforated, further supporting the airflow.

COMPACT CASE CONFIGURATION



Thanks to its compact dimensions, the REV100 can be easily integrated into any setup. Whether on or under the desk - the space-saving ATX case will cut a fine figure anywhere. A power supply tunnel has been dispensed with in the REV100 to maximize the interior space and to allow more flexibility when installing components and cables. This means that graphics cards with a maximum length of 31.5 cm and up to two 3.5" hard drives or three SSDs can be installed inside compact case.



4-Port Addressable RGB Controller



Removable HDD/SSD Cage

SPECIFICATIONS

General:

■ Form Factor:	ATX
■ Expansion Slots:	7
■ Interior Painting:	✓
■ Cable Management System:	✓
■ Side Panel:	Tempered Glass
■ Weight:	5.8 kg
■ Dimensions (L x W x H):	45.2 x 21.5 x 44.4 cm

RGB Compatibility:

■ Type:	Addressable
■ Ports:	4
■ Manual Control:	14 Modes
■ Mainboard Compatibility:	MSI Mystic Light Sync, ASUS Aura Sync, Gigabyte RGB Fusion Ready, ASRock Polychrome SYNC
■ RGB Pinout:	5V-D-G & 5V-D-coded-G

I/O:

■ USB 3.0 (Top):	2
■ Audio (Top):	✓

Maximum Drive Bays:

■ 3.5":	2
■ 2.5":	3

Fan Configuration:

■ Front Panel:	1x 120 mm Fan (Pre-Installed), 2x 120 mm Fans (Optional) or 2x 140 mm Fans (Optional)
■ Rear Panel:	1x 120 mm Addressable RGB LED Fan (Pre-Installed), 1x 120 mm Fan (Optional) or Radiator (Optional)

Compatibility:

■ Mainboard:	Mini-ITX, Micro-ATX, ATX
■ Max. Length Graphics Cards:	31.5 cm*
■ Max. Height CPU Cooler:	16.7 cm
■ Max. Length Power Supply:	20.0 cm
■ Max. Height Radiator incl. Fan (Rear):	5.5 cm

Package Contents:

■ REV100
■ Accessory Set
■ Manual

* 28.8 cm if 2x 3.5" HDDs installed

REV100
ATX PC CASE

