

# RAIDON



## SafeTANK GR3680 Series

2 Bay External Hardware RAID Storage for Two 3.5"/2.5" SATA Disk  
USB Type-C interface, compatible with USB Type-C and Type-A host interfaces.

SafeTANK GR3680 Series (GR3680) is a high performance, low cost RAID storage that supports high definition video and audio post production work flows. With easy-to-use button on the front panel, you can easily use it to store audio and video data and edit these data directly from USB Type-C enabled laptops, such like Macbook Pro.

### Features

1. External SATA drive storage for macOS and Windows
2. USB 3.2 Gen2 brings you up to 10Gbps high transfer rate
3. Support USB Type C interface, both positive and negative insertion
4. Applicable to USB Type-C or USB Type-A Host interface
5. No need to install drive, plug and play
6. Hot swappable drive, support 2 x 3.5" or 2.5" SATA HDD / SSD
7. High efficiency cooling fan, active cooling
8. Designed with aluminum construction for the fast heat dissipation



## User-friendly Display

RAIDON equipped with clear readable LCD display and LED indicators for system monitoring during operation so users can easily grasp the status of the system at all times. Moreover, it comes with visual and audio alarms whenever failure occurs.



## Compatible with USB Type-C and Type-A Hosts

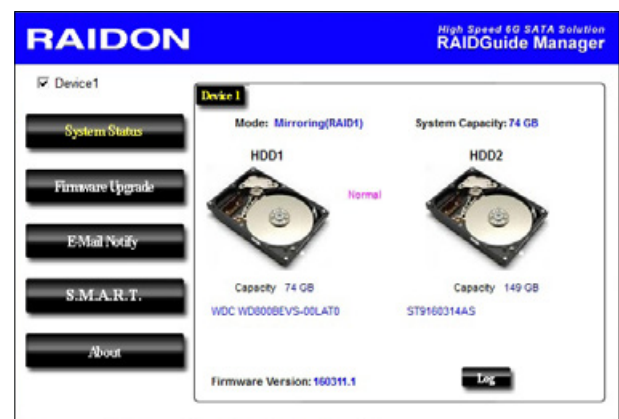
GR3680 comes with one USB Type-C interface, but not every PC/Mac comes with USB Type-C interface too. Therefore, based on the model, STARDOM provides two kinds of USB cables, one is USB Type-C to Type-C cable and the other is USB Type-C to Type-A cable, or both. User can choose which GR3680 to buy based on what host interface he/she has, no need to buy a adapter or other cable.



- GR3680-B31 : with 1 x USB Type-C to Type-C cable
- GR3680-B31A : with 1 x USB Type-C to Type-A cable
- GR3680-BA31 : with 1 x USB Type-C to Type-C cable & 1 x USB Type-C to Type-A cable

## Utility with Disk S.M.A.R.T. Information

STARDOM provides the Windows based Utility for monitoring the device, user just need to download it from STARDOM's website. When open the Utility, it will not only shows the status about the GR3680, also will shows the S.M.A.R.T. information of the two disks be used in the GR3680. With these useful information, user can change the disk before it really damaged to have better protection for the data stored in the GR3680.



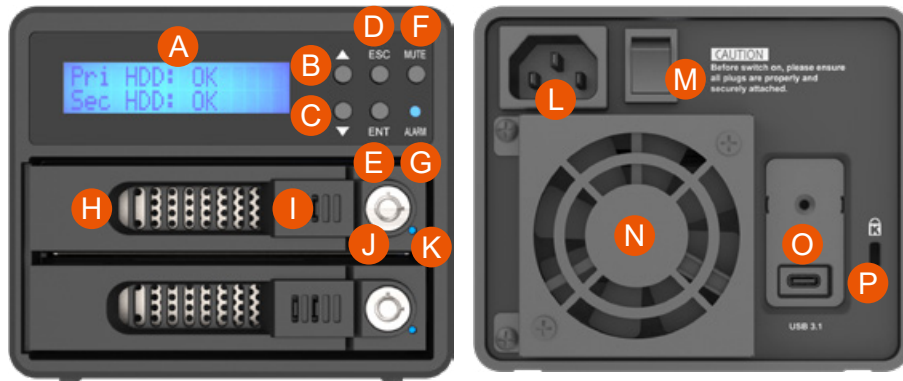
## Hot-Swappable Drisk Tray, supports 3.5"/2.5" Disk

Comes with easy-to-use disk tray, GR3680 supports most 3.5"/2.5" disk (both HDD and SSD) on the market. Under RAID 1 mode, when one disk failed, user just need to hot-swap out the failed disk and replace a new one back even the GR3680 is power on. It's easier for user to maintain the GR3680.



★ Spare removable drive tray available





- |                 |                         |                        |
|-----------------|-------------------------|------------------------|
| A. LCM          | G. Alarm indicator      | L. Power socket        |
| B. UP button    | H. HDD enclosure handle | M. Power switch        |
| C. DOWN button  | I. Tray button          | N. Fan                 |
| D. ESC button   | J. HDD tray key lock    | O. USB 3.1 Type-C port |
| E. ENTER button | K. HDD access light     | P. Anti-theft lock     |
| F. MUTE button  |                         |                        |

## Technical Specification

Interface	1 x USB 3.2 Gen2 Type-C (Performance up to 6Gbps)
Compatible Drive	2 x 3.5"/2.5" SATA III ( 6 Gbps) HDD/SSD
Certification	CE/FCC
Storage Mode	RAID 0 / RAID 1
Operating System Support	Windows 7 or above, OS X 10.10 or above
Electrical and perating Requirements	<ul style="list-style-type: none"> <li>• Line voltage: 100-240V AC</li> <li>• Frequency: 50Hz to 60Hz, single phase</li> <li>• Operating temperature: 32° to 104° F (0° to 40° C)</li> <li>• Storage temperature: -4° to 116° F (-20° to 47° C)</li> <li>• Relative humidity: 5% to 95% noncondensing</li> </ul>
Size	Height : 102 mm    Width : 122 mm    Depth : 205 mm
Product Code	GR3680-B31    EAN : 4713227441094    UPC : 884826505655 GR3680-B31A    EAN : 4713227441100    UPC : 884826505662 GR3680-BA31    EAN : 4713227441117    UPC : 884826505525
Carton	8 pcs per carton
Package Accessories	<ul style="list-style-type: none"> <li>• GR3680 x 1 (with removable drive tray enclosed x 1)</li> <li>• USB 3.2 Gen2 Type-C to Type-C Cable x 1 (for GR3680-BA31/GR3680-B31)</li> <li>• USB 3.2 Gen2 Type-C to Type-A Cable x 1 (for GR3680-BA31/GR3680-B31A)</li> <li>• AC Power Cable x 1</li> <li>• Quick Installation Guide x 1</li> <li>• Screws &amp; Keys</li> </ul>

