

Philips  
LCD monitor with  
PowerSensor

**B Line**  
25" (63.4 cm)  
WUXGA (1920 x 1200)

**252B9**



## Clear vision, beyond boundaries

Expand beyond boundaries with the new 16:10 frameless design Philips B Line monitor. Loaded with features to improve productivity and sustainability, this monitor takes it to the next level.

### Designed for sustainability

- PowerSensor saves up to 80% energy costs
- Zero power consumption with 0 watt hard switch
- 100% Recycled packing material

### Excellent performance

- 16:10 aspect ratio for more vertical screen height
- IPS technology for full colors and wide viewing angles

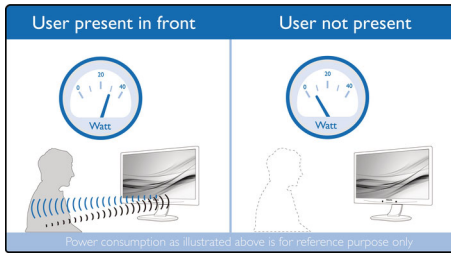
### Designed for the way you work

- SmartErgoBase enables people-friendly ergonomic adjustments
- VESA mount allows for the perfect setup
- Less eye fatigue with Flicker-free technology
- LowBlue Mode for easy on-the-eyes productivity
- EasyRead mode for a paper-like reading experience

# PHILIPS

# Highlights

## PowerSensor

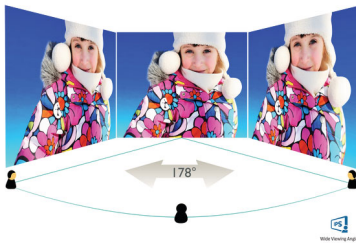


PowerSensor is a built-in 'people sensor' that transmits and receives harmless infrared signals to determine if user is present and automatically reduces monitor brightness when user steps away from the desk, cutting energy costs by up to 80 percent and prolonging monitor life

## Zero power consumption

At the flick of the 0 watt hard switch which is conveniently located at the back, you can completely cut-off your monitor from AC power. This results in zero power consumption reducing your carbon footprint even further

## IPS technology



IPS displays use an advanced technology which gives you extra wide viewing angles of 178/178 degree, making it possible to view the display from almost any angle - even in 90 degree Pivot mode! Unlike standard TN panels, IPS displays gives you remarkably crisp images with vivid colors, making it ideal not only for Photos,

movies and web browsing, but also for professional applications which demand color accuracy and consistent brightness at all times.

## SmartErgoBase



The SmartErgoBase is a monitor base that delivers ergonomic display comfort and provides cable management. The base's people-friendly height, swivel, tilt and rotation angle adjustments position the monitor for maximum comfort that can ease the physical strains of a long workday; cable management reduces cable clutter and keeps the workspace neat and professional.

## VESA mount

VESA pattern guarantees compatibility hundreds of innovative mounting solutions.

## Flicker-free technology



Due to the way brightness is controlled on LED-backlit screens, some users experience flicker on their screen which causes eye fatigue. Philips Flicker-free Technology applies

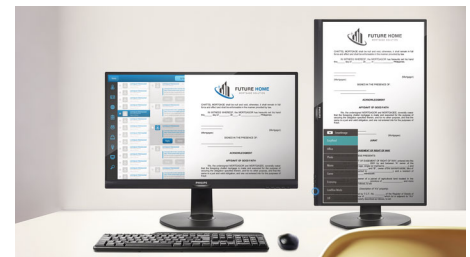
a new solution to regulate brightness and reduce flicker for more comfortable viewing.

## LowBlue Mode



Studies have shown that just as ultra-violet rays can cause eye damage, shortwave length blue light rays from LED displays can cause eye damage and affect vision over time. Developed for wellbeing, Philips LowBlue Mode setting uses a smart software technology to reduce harmful shortwave blue light.

## EasyRead mode



EasyRead mode for a paper-like reading experience



# Specifications

## Picture/Display

- LCD panel type: IPS technology
- Backlight type: W-LED system
- Panel Size: 25 inch / 63.4 cm
- Display Screen Coating: Anti-Glare, 3H, Haze 25%
- Effective viewing area: 535.5 (H) x 338.8 (V)
- Aspect ratio: 16:10
- Optimum resolution: 1920 x 1200 @ 60Hz
- Pixel Density: 91 PPI
- Response time (typical): 5 ms (Gray to Gray)\*
- Brightness: 300 cd/m<sup>2</sup>
- Contrast ratio (typical): 1000:1
- SmartContrast: 50,000,000:1
- Pixel pitch: 0.279 x 0.282 mm
- Viewing angle: 178° (H) / 178° (V), @ C/R > 10
- Flicker-free
- Picture enhancement: SmartImage
- Color gamut (typical): NTSC 90%\*, sRGB 107.5%\*
- Display colors: 16.7M
- Scanning Frequency: 30 - 96 kHz (H) / 48 - 76 Hz (V)
- sRGB
- EasyRead
- LowBlue Mode

## Connectivity

- Signal Input: VGA (Analog), DVI-D (digital, HDCP), DisplayPort 1.2, HDMI 1.4
- HDCP: HDCP 1.4 (HDMI/ DP)
- Sync Input: Separate Sync, Sync on Green
- USB: USB 3.1 x 1 (upstream), USB 3.1 x 4 (downstream with 1 fast charge B.C 1.2)
- Audio (In/Out): PC audio-in, Headphone out

## Convenience

- Built-in Speakers: 2 W x 2
- User convenience: SmartImage, Input, Brightness, Menu, Power On/Off
- Control software: SmartControl
- OSD Languages: Brazil Portuguese, Czech, Dutch, English, Finnish, French, German, Greek, Hungarian, Italian, Japanese, Korean, Polish, Portuguese, Russian, Simplified Chinese, Spanish, Swedish, Traditional Chinese, Turkish, Ukrainian
- Other convenience: Kensington lock, VESA mount (100x100mm)
- Plug & Play Compatibility: DDC/CI, Mac OS X, sRGB, Windows 10 / 8.1 / 8 / 7

## Stand

- Height adjustment: 150 mm
- Pivot: +/- 90 degree
- Swivel: +/- 175 degree
- Tilt: -5 ~ 30 degree

## Power

- ECO mode: 12.3 W (typ.)
- On mode: 15 W (typ.) (EnergyStar 7.0 test method)
- Standby mode: < 0.5 W (typ.)
- Off mode: Zero watts with Zero switch
- Energy Label Class: A+
- Power LED indicator: Operation - White, Standby mode- White (blinking)
- Power supply: Built-in, 100-240VAC, 50-60Hz

## Dimensions

- Product with stand(max height): 546 x 541 x 206 mm
- Product without stand (mm): 546 x 367 x 49 mm
- Packaging in mm (WxHxD): 608 x 524 x 197 mm

## Weight

- Product with stand (kg): 5.09 kg
- Product without stand (kg): 3.50 kg
- Product with packaging (kg): 7.44 kg

## Operating conditions

- Temperature range (operation): 0°C to 40°C °C
- Temperature range (storage): -20°C to 60°C °C
- Relative humidity: 20%-80 %
- Altitude: Operation: +12,000ft (3,658m), Non-operation: +40,000ft (12,192m)
- MTBF (demonstrated): 70,000 hrs (excluded backlight)

## Sustainability

- Environmental and energy: PowerSensor, EnergyStar 7.0, EPEAT\*, TCO certified, WEEE, RoHS
- Recyclable packaging material: 100 %
- Post consumer recycled plastic: 85%
- Specific Substances: PVC / BFR free housing, Mercury free, Lead free

## Compliance and standards

- Regulatory Approvals: CE Mark, FCC Class B, SEMKO, cETLus, CU-EAC, TUV Ergo, TUV/GS, EPA, ICES-003, UKRAINIAN, SASO, KUCAS, VCCI, RCM, CCC

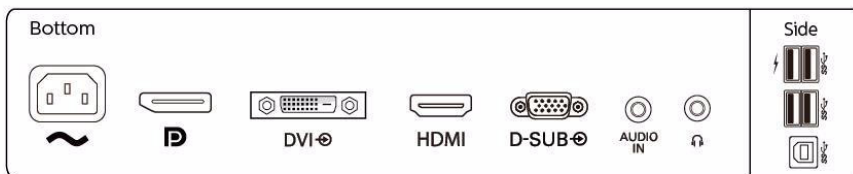
## Cabinet

- Front bezel: Black
- Rear cover: Black
- Foot: Black
- Finish: Texture

## What's in the box?

- Monitor with stand

- Cables: D-Sub cable, DVI-D cable, HDMI cable, DP cable, Audio cable, Power cable
- User Documentation



Issue date 2018-12-28

Version: 2.0.1

12 NC: 8670 001 56963  
EAN: 87 12581 75464 8

© 2018 Koninklijke Philips N.V.  
All Rights reserved.

Specifications are subject to change without notice.  
Trademarks are the property of Koninklijke Philips N.V.  
or their respective owners.

[www.philips.com](http://www.philips.com)

\* "IPS" word mark / trademark and related patents on technologies belong to their respective owners.  
\* Response time value equal to SmartResponse  
\* NTSC Area based on CIE1976  
\* sRGB Area based on CIE 1931  
\* Fast charging complies with USB BC 1.2 standard  
\* EPEAT Gold or Silver is valid only where Philips registers the product. Please visit [www.epeat.net](http://www.epeat.net) for registration status in your country.  
\* The monitor may look different from feature images.