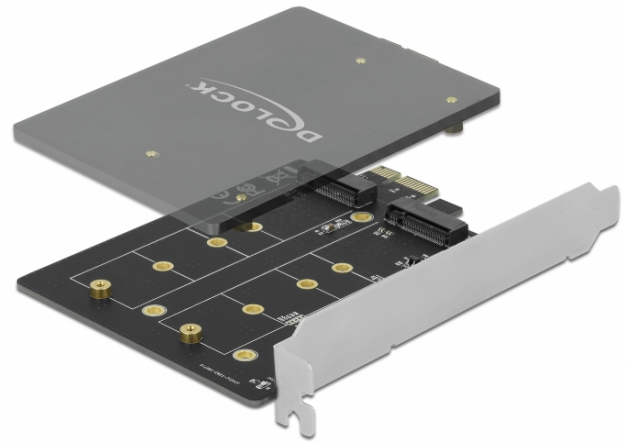


# Delock PCI Express x1 Card to 2 x internal M.2 Key B

## Description

This PCI Express card by Delock expands the PC by two M.2 slots. Up to two M.2 SATA modules can be connected in format 2280, 2260, 2242, 2230 with this card. With the help of the large heat sink sufficient cooling of the M.2 modules is guaranteed.



## Specification

- Connectors:  
internal:  
2 x 67 pin M.2 key B slot  
1 x PCI Express x1, V3.0
- Chipset: JMicron JMB582
- 3 x LED indicator
- Interface: SATA
- Supports M.2 modules in format 2280, 2260, 2242 and 2230 with key B or key B+M based on SATA
- Maximum height of the components on the module: 1.5 mm, application of double-sided assembled modules supported
- Supports Native Command Queuing (NCQ)
- Supports S.M.A.R.T.
- Supports TRIM
- Supports DevSleep
- Hot Swap
- Bootable

## System requirements

- Linux Kernel 3.3 or above
- Windows 7/7-64/8.1/8.1-64/10/10-64
- PC with one free PCI Express slot

## Package content

- PCI Express card
- Heat sink
- 2 x thermal pad
- M.2 mounting material
- User manual

## Item no. 90432

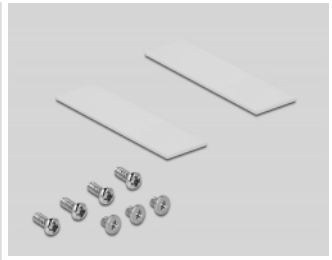
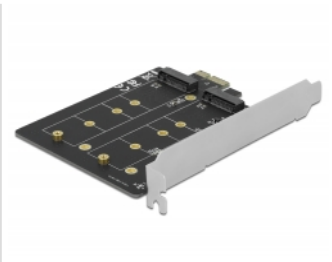
EAN: 4043619904327

Country of origin: China

Package: Retail Box



Images



**General**

Form factor:	Low Profile
Supported operating system:	Windows 7 32-bit Windows 7 64-bit Windows 8.1 32-bit Windows 8.1 64-bit Windows 10 32-bit Windows 10 64-bit Linux Kernel 3.3 or above
Supported module:	M.2 modules in format 22110, 2280, 2260, 2242 and 2230 with key B or key B+M based on SATA

**Interface**

Connector 1:	1 x PCI Express x1, V3.0
Connector 2:	2 x 67 pin M.2 key B slot

**Technical characteristics**

Chipset:	JMicron JMB582
----------	----------------

**Physical characteristics**

Slot bracket:	low profile standard
---------------	-------------------------